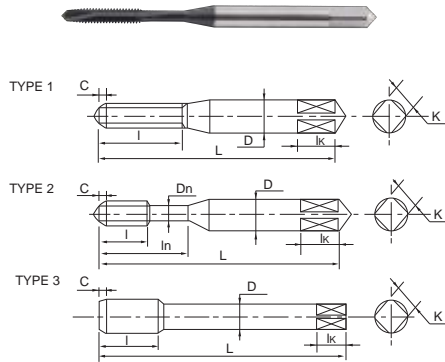


## Stainless Steel Spiral Taps

NX-ZSS 不锈钢用螺旋丝锥



### Material

NC XPM HSSN

### Surface Treatment

NN NT NC ND NR

Suitable for through hole and blind hole using, with spiral cutting, it has good cutting performance;  
适合通孔和盲孔用,有良好的排削性能;

The cutting edge and chip groove have been specially treated, and the surface is coated with special coatings, which can effectively improve the stability and processing efficiency in the process of machining;  
刃口和排屑槽经过特殊处理、表面采用特殊的涂层、有效提高加工过程中的稳定性和加工效率;

Suitable for processing different kinds of stainless steel materials: SUS410、SUS420、SUS430、SUS301、SUS303、SUS304、SUS316、SUS317;  
适合加工各类不锈钢材料: SUS410、SUS420、SUS430、SUS301、SUS303、SUS304、SUS316、SUS317;

Order demonstration : M1.0\*0.25 N1 NX-XPM-ND

Thread size	Pitch	Limit	Type	C	L	I	Dn	In	D	k	lk
M1.0	0.25	N1	1	2.5P	30	5	-	-	3.0	2.5	5
M1.0	0.25	N2	1	2.5P	30	5	-	-	3.0	2.5	5
M1.2	0.25	N1	1	2.5P	32	5	-	-	3.0	2.5	5
M1.2	0.25	N2	1	2.5P	32	5	-	-	3.0	2.5	5
M1.4	0.30	N1	1	2.5P	36	7	-	-	3.0	2.5	5
M1.4	0.30	N2	1	2.5P	36	7	-	-	3.0	2.5	5
M1.6	0.35	N1	1	2.5P	36	8	-	-	3.0	2.5	5
M1.6	0.35	N2	1	2.5P	36	8	-	-	3.0	2.5	5
M1.7	0.35	N1	1	2.5P	36	8	-	-	3.0	2.5	5
M1.7	0.35	N2	1	2.5P	36	8	-	-	3.0	2.5	5
M1.8	0.35	N1	1	2.5P	36	8	-	-	3.0	2.5	5
M1.8	0.35	N2	1	2.5P	36	8	-	-	3.0	2.5	5
M2.0	0.40	N1	2	2.5P	42	5	1.5	11.0	3.0	2.5	5
M2.0	0.40	N2	2	2.5P	42	5	1.5	11.0	3.0	2.5	5
M2.3	0.40	N1	2	2.5P	42	5.6	1.8	11.0	3.0	2.5	5
M2.3	0.40	N2	2	2.5P	42	5.6	1.8	11.0	3.0	2.5	5
M2.5	0.45	N1	2	2.5P	46	5.6	2.0	13.0	3.0	2.5	5
M2.5	0.45	N2	2	2.5P	46	5.6	2.0	13.0	3.0	2.5	5
M2.6	0.45	N1	2	2.5P	46	5.6	2.1	13.0	3.0	2.5	5
M2.6	0.45	N2	2	2.5P	46	5.6	2.1	13.0	3.0	2.5	5
M3.0	0.50	N2	2	2.5P	46	6.3	2.4	15.0	4.0	3.2	6
M3.0	0.50	N3	2	2.5P	46	6.3	2.4	15.0	4.0	3.2	6
M3.0	0.35	N2	2	2.5P	46	6.3	2.4	15.0	4.0	3.2	6
M3.0	0.35	N3	2	2.5P	46	6.3	2.4	15.0	4.0	3.2	6
M3.5	0.60	N2	2	2.5P	52	9.6	2.8	20.0	5.0	4.0	7
M3.5	0.60	N3	2	2.5P	52	9.6	2.8	20.0	5.0	4.0	7
M4	0.70	N2	2	2.5P	52	11.2	3.2	21.0	5.0	4.0	7
M4	0.70	N3	2	2.5P	52	11.2	3.2	21.0	5.0	4.0	7
M4	0.50	N2	2	2.5P	52	11.2	3.2	21.0	5.0	4.0	7
M4	0.50	N3	2	2.5P	52	11.2	3.2	21.0	5.0	4.0	7
M5	0.80	N2	2	2.5P	60	12.8	4.1	23.0	5.5	4.5	7
M5	0.80	N3	2	2.5P	60	12.8	4.1	23.0	5.5	4.5	7
M5	0.50	N2	2	2.5P	60	12.8	4.1	23.0	5.5	4.5	7
M5	0.50	N3	2	2.5P	60	12.8	4.1	23.0	5.5	4.5	7
M6	1.00	N2	2	2.5P	62	14.0	4.9	24.0	6.0	4.5	7
M6	1.00	N3	2	2.5P	62	14.0	4.9	24.0	6.0	4.5	7

## Stainless Steel Spiral Taps

NX-ZSS 不锈钢用螺旋丝锥

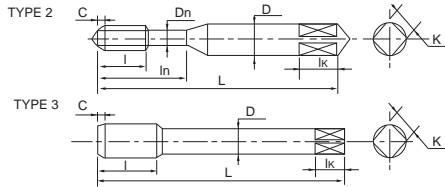
Order demonstration : M6\*0.75 N2 NX-XPM-ND

Thread size	Pitch	Limit	Type	C	L	I	Dn	In	D	k	lk
M6	0.75	N2	2	2.5P	62	14.0	4.9	24.0	6.0	4.5	7
M6	0.75	N3	2	2.5P	62	14.0	4.9	24.0	6.0	4.5	7
M8	1.25	N3	3	2.5P	70	19.0	-	-	6.2	5.0	8
M8	1.25	N4	3	2.5P	70	19.0	-	-	6.2	5.0	8
M8	1.00	N3	3	2.5P	70	19.0	-	-	6.2	5.0	8
M8	1.00	N4	3	2.5P	70	19.0	-	-	6.2	5.0	8
M8	0.75	N3	3	2.5P	70	19.0	-	-	6.2	5.0	8
M8	0.75	N4	3	2.5P	70	19.0	-	-	6.2	5.0	8
M10	1.50	N3	3	2.5P	75	24.0	-	-	7.0	5.5	8
M10	1.50	N4	3	2.5P	75	24.0	-	-	7.0	5.5	8
M10	1.25	N3	3	2.5P	75	24.0	-	-	7.0	5.5	8
M10	1.25	N4	3	2.5P	75	24.0	-	-	7.0	5.5	8
M10	1.00	N3	3	2.5P	75	24.0	-	-	7.0	5.5	8
M10	1.00	N4	3	2.5P	75	24.0	-	-	7.0	5.5	8
M12	1.75	N3	3	2.5P	82	29.0	-	-	8.5	6.5	9
M12	1.75	N4	3	2.5P	82	29.0	-	-	8.5	6.5	9
M12	1.50	N3	3	2.5P	82	29.0	-	-	8.5	6.5	9
M12	1.50	N4	3	2.5P	82	29.0	-	-	8.5	6.5	9
M12	1.25	N3	3	2.5P	82	29.0	-	-	8.5	6.5	9
M12	1.25	N4	3	2.5P	82	29.0	-	-	8.5	6.5	9
M12	1.00	N3	3	2.5P	82	29.0	-	-	8.5	6.5	9
M12	1.00	N4	3	2.5P	82	29.0	-	-	8.5	6.5	9
M14	2.00	N3	3	2.5P	88	30.0	-	-	10.5	8.0	11
M14	2.00	N4	3	2.5P	88	30.0	-	-	10.5	8.0	11
M14	1.50	N3	3	2.5P	88	30.0	-	-	10.5	8.0	11
M14	1.50	N4	3	2.5P	88	30.0	-	-	10.5	8.0	11
M14	1.00	N3	3	2.5P	88	30.0	-	-	10.5	8.0	11
M14	1.00	N4	3	2.5P	88	30.0	-	-	10.5	8.0	11
M16	2.00	N3	3	2.5P	95	32.0	-	-	12.5	10.0	13
M16	2.00	N4	3	2.5P	95	32.0	-	-	12.5	10.0	13
M16	1.50	N3	3	2.5P	95	32.0	-	-	12.5	10.0	13
M16	1.50	N4	3	2.5P	95	32.0	-	-	12.5	10.0	13
M18	2.50	N3	3	2.5P	100	37.0	-	-	14.0	11.0	14
M18	2.50	N4	3	2.5P	100	37.0	-	-	14.0	11.0	14
M18	1.50	N3	2	2.5P	100	37.0	-	-	14.0	11.0	14
M18	1.50	N4	2	2.5P	100	37.0	-	-	14.0	11.0	14
M20	2.50	N3	2	2.5P	105	37.0	-	-	15.0	12.0	15
M20	2.50	N4	2	2.5P	105	37.0	-	-	15.0	12.0	15
M20	1.50	N3	3	2.5P	105	37.0	-	-	15.0	12.0	15
M20	1.50	N4	3	2.5P	105	37.0	-	-	15.0	12.0	15



## Threaded Sleeve Tip Taps

NZT-ZLT 螺套先端丝锥



### Material

NC XPM HSSN

### Surface Treatment

NN NT NC ND NR

The cutting edge and chip groove have been specially treated, have good cutting performance;  
刃口和排屑槽经过特殊处理、有良好的排屑性能;

Fully grinding high precision threads, and the surface is coated with special coatings, which can effectively improve the stability and processing efficiency in the process of machining;  
全磨制高精度螺纹、表面采用特殊的涂层、有效提高加工过程中的稳定性和加工效率;

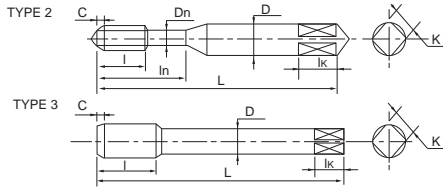
Suitable for processing materials: steel, alloy steel, stainless steel, cast iron, refractory materials, high hardness materials, non-ferrous metals;  
适合加工各类材料: 钢、不锈钢、铸铁、有色金属、难加工材料、高硬度材料;

Order demonstration : M2.6\*0.45 N1 NZT-XPM-ND

Thread size	Pitch	Limit	Type	C	L	I	Dn	In	D	k	lk
M2.6	0.45	N1	2	5P	52	6.8	-	16.0	5.0	4.0	7
M3	0.50	N1	2	5P	52	7.5	-	17.0	5.0	4.0	7
M4	0.70	N1	2	5P	60	12.0	-	22.0	0.5	4.5	7
M5	0.80	N1	2	5P	62	15.0	-	26.0	6.0	4.5	7
M6	1.00	N1	2	5P	70	19.0	-	-	6.2	5.0	8
M8	1.25	N1	3	5P	75	23.0	-	-	7.0	5.5	8
M10	1.50	N1	3	5P	82	26.0	-	-	8.5	6.5	9
M10	1.25	N1	3	5P	82	26.0	-	-	8.5	6.5	9
M10	1.00	N1	3	5P	82	26.0	-	-	8.5	6.5	9
M12	1.75	N1	3	5P	95	26.0	-	-	12.5	10.0	13
M12	1.50	N1	3	5P	88	26.0	-	-	10.5	8.0	11
M12	1.25	N1	3	5P	88	26.0	-	-	10.5	8.0	11
M14	2.00	N1	3	5P	100	33.0	-	-	14.0	11.0	14
M14	1.50	N1	3	5P	95	26.0	-	-	12.5	10.0	13
M16	2.00	N1	3	5P	105	33.0	-	-	15.0	12.0	15
M16	1.50	N1	3	5P	100	33.0	-	-	14.0	11.0	14
M18	2.50	N1	3	5P	115	33.0	-	-	17.0	13.0	16
M18	1.50	N1	3	5P	105	33.0	-	-	15.0	12.0	15
M20	2.50	N1	3	5P	120	39.0	-	-	19.0	15.0	18
M20	1.50	N1	3	5P	115	33.0	-	-	17.0	13.0	16
M22	2.50	N1	3	5P	125	39.0	-	-	19.0	15.0	18
M22	1.50	N1	3	5P	120	39.0	-	-	19.0	15.0	18
M24	3.00	N1	3	5P	135	16.0	-	-	23.0	17.0	20
M24	1.50	N1	3	5P	130	39.0	-	-	20.0	15.0	18

## Threaded Sleeve Spiral Taps

NX-ZLT 螺套螺旋丝锥



### Material

NC XPM HSSN

### Surface Treatment

NN NT NC ND NR

The cutting edge and chip groove have been specially treated, have good cutting performance;

刃口和排屑槽经过特殊处理,有良好的排削性能;

Fully grinding high precision threads, and the surface is coated with special coatings, which can effectively improve the stability and processing efficiency in the process of machining;

全磨制高精度螺纹、表面采用特殊的涂层、有效提高加工过程中的稳定性和加工效率;

Suitable for processing materials: steel, alloy steel, stainless steel, cast iron, refractory materials, high hardness materials, non-ferrous metals;

适合加工各类材料: 钢、不锈钢、铸铁、有色金属、难加工材料、高硬度材料;

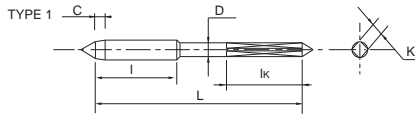
Order demonstration : M2.6\*0.45 N1 NX-XPM-ND

Thread size	Pitch	Limit	Type	C	L	I	Dn	In	D	k	lk
M2.6	0.45	N1	2	5P	52	6.8	-	16.0	5.0	4.0	7
M3	0.50	N1	2	5P	52	7.5	-	17.0	5.0	4.0	7
M4	0.70	N1	2	5P	60	12.0	-	22.0	0.5	4.5	7
M5	0.80	N1	2	5P	62	15.0	-	26.0	6.0	4.5	7
M6	1.00	N1	2	5P	70	19.0	-	-	6.2	5%	8
M8	1.25	N1	3	5P	75	23.0	-	-	7.0	5.5	8
M10	1.50	N1	3	5P	82	26.0	-	-	8.5	6.5	9
M10	1.25	N1	3	5P	82	26.0	-	-	8.5	6.5	9
M10	1.00	N1	3	5P	82	26.0	-	-	8.5	6.5	9
M12	1.75	N1	3	5P	95	26.0	-	-	12.5	10.0	13
M12	1.50	N1	3	5P	88	26.0	-	-	10.5	8.0	11
M12	1.25	N1	3	5P	88	26.0	-	-	10.5	8.0	11
M14	2.00	N1	3	5P	100	33.0	-	-	14.0	11.0	14
M14	1.50	N1	3	5P	95	26.0	-	-	12.5	10.0	13
M16	2.00	N1	3	5P	105	33.0	-	-	15.0	12.0	15
M16	1.50	N1	3	5P	100	33.0	-	-	14.0	11.0	14
M18	2.50	N1	3	5P	115	33.0	-	-	17.0	13.0	16
M18	1.50	N1	3	5P	105	33.0	-	-	15.0	12.0	15
M20	2.50	N1	3	5P	120	39.0	-	-	19.0	15.0	18
M20	1.50	N1	3	5P	115	33.0	-	-	17.0	13.0	16
M22	2.50	N1	3	5P	125	39.0	-	-	19.0	15.0	18
M22	1.50	N1	3	5P	120	39.0	-	-	19.0	15.0	18
M24	3.00	N1	3	5P	135	16.0	-	-	23.0	17.0	20
M24	1.50	N1	3	5P	130	39.0	-	-	20.0	15.0	18



## Nut Taps

RN 螺母丝锥



### Material

NC XPM HSSN

### Surface Treatment

NN NT NC ND NR

The cutting edge and chip groove have been specially treated, have good cutting performance;  
刃口和排屑槽经过特殊处理、有良好的排屑性能;

Fully grinding high precision threads, and the surface is coated with special coatings, which can effectively improve the stability and processing efficiency in the process of machining;  
全磨制高精度螺纹、表面采用特殊的涂层、有效提高加工过程中的稳定性和加工效率;

Suitable for processing materials: steel, alloy steel, stainless steel, cast iron, refractory materials, high hardness materials, non-ferrous metals;  
适合加工各类材料：钢、不锈钢、铸铁、有色金属、难加工材料、高硬度材料;

Order demonstration : M2.6\*0.45 N1 RN-XPM-ND

Thread size	Pitch	Limit	Type	C	L	l	Dn	In	D	k	lk
M2.6	0.45	N1	1	-	55	11.3	-	-	2.0	-	-
M2.6	0.45	N2	1	-	55	11.3	-	-	2.0	-	-
M2.6	0.45	N3	1	-	55	11.3	-	-	2.0	-	-
M3	0.50	N2	1	-	58	12.5	-	-	2.3	-	-
M3	0.50	N3	1	-	58	12.5	-	-	2.3	-	-
M3	0.50	N4	1	-	58	12.5	-	-	2.3	-	-
M4	0.70	N2	1	-	58	17.5	-	-	3.0	-	-
M4	0.70	N3	1	-	58	17.5	-	-	3.0	-	-
M4	0.70	N4	1	-	58	17.5	-	-	3.0	-	-
M5	0.80	N2	1	-	63	20.0	-	-	3.8	-	-
M5	0.80	N3	1	-	63	20.0	-	-	3.8	-	-
M5	0.80	N4	1	-	63	20.0	-	-	3.8	-	-
M5	0.80	N5	1	-	63	20.0	-	-	3.8	-	-
M6	1.00	N2	1	-	67	25.0	-	-	4.5	-	-
M6	1.00	N3	1	-	67	25.0	-	-	4.5	-	-
M6	1.00	N4	1	-	67	25.0	-	-	4.5	-	-
M6	1.00	N5	1	-	67	25.0	-	-	4.5	-	-
M7	1.00	N2	1	-	70	25.0	-	-	5.6	-	-
M7	1.00	N3	1	-	70	25.0	-	-	5.6	-	-
M7	1.00	N4	1	-	70	25.0	-	-	5.6	-	-
M7	1.00	N5	1	-	70	25.0	-	-	5.6	-	-
M8	1.25	N2	1	-	77	31.3	-	-	6.05	-	-
M8	1.25	N3	1	-	77	31.3	-	-	6.05	-	-
M8	1.25	N4	1	-	77	31.3	-	-	6.05	-	-
M8	1.25	N5	1	-	77	31.3	-	-	6.05	-	-
M10	1.50	N2	1	-	89	37.5	-	-	7.8	-	-
M10	1.50	N3	1	-	89	37.5	-	-	7.8	-	-
M10	1.50	N4	1	-	89	37.5	-	-	7.8	-	-
M10	1.50	N5	1	-	89	37.5	-	-	7.8	-	-
M10	1.25	N2	1	-	89	31.3	-	-	8.1	-	-
M10	1.25	N3	1	-	89	31.3	-	-	8.1	-	-
M10	1.25	N4	1	-	89	31.3	-	-	8.1	-	-
M10	1.25	N5	1	-	89	31.3	-	-	8.1	-	-
M10	1.00	N2	1	-	89	25.0	-	-	8.4	-	-
M10	1.00	N3	1	-	89	25.0	-	-	8.4	-	-
M10	1.00	N4	1	-	89	25.0	-	-	8.4	-	-

## Nut Taps

RN 螺母丝锥

Order demonstration : M10\*1.00 N5 RN-XPM-ND

Thread size	Pitch	Limit	Type	C	L	I	Dn	In	D	k	lk
M10	1.00	N5	1	-	89	25.0	-	-	8.4	-	-
M12	1.75	N3	1	-	102	43.8	-	-	9.5	-	-
M12	1.75	N4	1	-	102	43.8	-	-	9.5	-	-
M12	1.75	N5	1	-	102	43.8	-	-	9.5	-	-
M12	1.75	N6	1	-	102	43.8	-	-	9.5	-	-
M12	1.50	N3	1	-	102	37.5	-	-	9.8	-	-
M12	1.50	N4	1	-	102	37.5	-	-	9.8	-	-
M12	1.50	N5	1	-	102	37.5	-	-	9.8	-	-
M12	1.50	N6	1	-	102	37.5	-	-	9.8	-	-
M12	1.25	N3	1	-	102	31.3	-	-	10.1	-	-
M12	1.25	N4	1	-	102	31.3	-	-	10.1	-	-
M12	1.25	N5	1	-	102	31.3	-	-	10.1	-	-
M12	1.25	N6	1	-	102	31.3	-	-	10.1	-	-
M12	1.00	N2	1	-	102	25.0	-	-	10.5	-	-
M12	1.00	N3	1	-	102	25.0	-	-	10.5	-	-
M12	1.00	N4	1	-	102	25.0	-	-	10.5	-	-
M12	1.00	N5	1	-	102	25.0	-	-	10.5	-	-
M14	2.00	N3	1	-	114	50.0	-	-	11.2	-	-
M14	2.00	N4	1	-	114	50.0	-	-	11.2	-	-
M14	2.00	N5	1	-	114	50.0	-	-	11.2	-	-
M14	2.00	N6	1	-	114	50.0	-	-	11.2	-	-
M14	2.00	N7	1	-	114	50.0	-	-	11.2	-	-
M14	1.50	N3	1	-	114	37.5	-	-	11.2	-	-
M14	1.50	N4	1	-	114	37.5	-	-	11.2	-	-
M14	1.50	N5	1	-	114	37.5	-	-	11.2	-	-
M14	1.50	N6	1	-	114	37.5	-	-	11.2	-	-
M16	2.00	N3	1	-	127	50.0	-	-	13.1	-	-
M16	2.00	N4	1	-	127	50.0	-	-	13.1	-	-
M16	2.00	N5	1	-	127	50.0	-	-	13.1	-	-
M16	2.00	N6	1	-	127	50.0	-	-	13.1	-	-
M16	2.00	N7	1	-	127	50.0	-	-	13.1	-	-
M16	1.50	N3	1	-	127	37.5	-	-	13.1	-	-
M16	1.50	N4	1	-	127	37.5	-	-	13.1	-	-
M16	1.50	N5	1	-	127	37.5	-	-	13.1	-	-
M16	1.50	N6	1	-	127	37.5	-	-	13.1	-	-
M18	2.50	N4	1	-	133	62.5	-	-	14.0	-	-
M18	2.50	N5	1	-	133	62.5	-	-	14.0	-	-
M18	2.50	N6	1	-	133	62.5	-	-	14.0	-	-
M18	2.50	N7	1	-	133	62.5	-	-	14.0	-	-
M18	2.00	N8	1	-	133	50.0	-	-	15.0	-	-
M18	2.00	N3	1	-	133	50.0	-	-	15.0	-	-
M18	2.00	N4	1	-	133	50.0	-	-	15.0	-	-
M18	2.00	N5	1	-	133	50.0	-	-	15.0	-	-
M18	2.00	N6	1	-	133	50.0	-	-	15.0	-	-
M18	2.00	N7	1	-	133	50.0	-	-	15.0	-	-
M20	2.50	N4	1	-	133	62.5	-	-	16.5	-	-
M20	2.50	N5	1	-	133	62.5	-	-	16.5	-	-
M20	2.50	N6	1	-	133	62.5	-	-	16.5	-	-
M20	2.50	N7	1	-	133	62.5	-	-	16.5	-	-
M20	2.00	N8	1	-	133	50.0	-	-	16.5	-	-
M20	2.00	N3	1	-	133	50.0	-	-	16.5	-	-



## Nut Taps

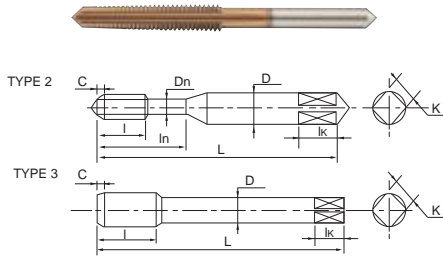
RN 螺母丝锥

Order demonstration : M20\*2.00 N4 RN-XPM-ND

Thread size	Pitch	Limit	Type	C	L	I	Dn	In	D	k	Ik
M20	2.00	N4	1	-	133	50.0	-	-	16.5	-	-
M20	2.00	N5	1	-	133	50.0	-	-	16.5	-	-
M20	2.00	N6	1	-	133	50.0	-	-	16.5	-	-
M20	2.00	N7	1	-	133	50.0	-	-	16.5	-	-
M20	1.50	N3	1	-	133	37.5	-	-	16.5	-	-
M20	1.50	N4	1	-	133	37.5	-	-	16.5	-	-
M20	1.50	N5	1	-	133	37.5	-	-	16.5	-	-
M20	1.50	N6	1	-	133	37.5	-	-	16.5	-	-
M20	1.50	N7	1	-	133	37.5	-	-	16.5	-	-
M22	2.50	N4	1	-	146	62.5	-	-	17.5	-	-
M22	2.50	N5	1	-	146	62.5	-	-	17.5	-	-
M22	2.50	N6	1	-	146	62.5	-	-	17.5	-	-
M22	2.50	N7	1	-	146	62.5	-	-	17.5	-	-
M22	2.50	N8	1	-	146	62.5	-	-	17.5	-	-
M22	2.00	N3	1	-	146	50.0	-	-	19.0	-	-
M22	2.00	N4	1	-	146	50.0	-	-	19.0	-	-
M22	2.00	N5	1	-	146	50.0	-	-	19.0	-	-
M22	2.00	N6	1	-	146	50.0	-	-	19.0	-	-
M22	2.00	N7	1	-	146	50.0	-	-	19.0	-	-
M24	3.00	N4	1	-	165	75.0	-	-	18.5	-	-
M24	3.00	N5	1	-	165	75.0	-	-	18.5	-	-
M24	3.00	N6	1	-	165	75.0	-	-	18.5	-	-
M24	3.00	N7	1	-	165	75.0	-	-	18.5	-	-
M24	3.00	N8	1	-	165	75.0	-	-	18.5	-	-
M24	2.00	N3	1	-	165	50.0	-	-	20.0	-	-
M24	2.00	N4	1	-	165	50.0	-	-	20.0	-	-
M24	2.00	N5	1	-	165	50.0	-	-	20.0	-	-
M24	2.00	N6	1	-	165	50.0	-	-	20.0	-	-
M24	2.00	N7	1	-	165	50.0	-	-	20.0	-	-
M24	1.50	N3	1	-	165	37.5	-	-	21.5	-	-
M24	1.50	N4	1	-	165	37.5	-	-	21.5	-	-
M24	1.50	N5	1	-	165	37.5	-	-	21.5	-	-
M24	1.50	N6	1	-	165	37.5	-	-	21.5	-	-
M24	1.50	N7	1	-	165	37.5	-	-	21.5	-	-

## High Hardness SteelTaps

NV 高硬度钢用丝锥



### Material

NC XPM HSSN

### Surface Treatment

NN NT NC ND NR

Suitable for through hole and blind hole, with straight groove cutting and good cutting performance;  
适合通孔和盲孔用, 采用直槽排削、有良好的排削性能;

Adopted special material, special coating surface treatment, have excellent performance in the processing process;  
采用特殊材料、特殊涂层表面处理、在加工过程有极好的性能;

Suitable for for processing high hardness materials: hardened steel, tool steel, SKT11, SKD61. Hardness of Machinable materials HRC55-63HRC;  
适合加工高硬度材料: 淬火钢、工具钢、SKT11、SKD61, 能加工材料硬度 HRC55-63HRC;

Order demonstration : M3\*0.50 N1 NV-XPM-ND

Thread size	Pitch	Limit	Type	C	L	I	Dn	In	D	k	lk
M3	0.50	N1	2	2.5P	46	8.0	2.4	16.0	4.0	3.2	6.0
M3	0.50	N2	2	2.5P	46	8.0	2.4	16.0	4.0	3.2	6.0
M3	0.50	N3	2	2.5P	46	8.0	2.4	16.0	4.0	3.2	6.0
M4	0.70	N2	2	2.5P	52	9.0	3.2	19.0	5.0	4.0	7.0
M4	0.70	N3	2	2.5P	52	9.0	3.2	19.0	5.0	4.0	7.0
M4	0.70	N4	2	2.5P	52	9.0	3.2	19.0	5.0	4.0	7.0
M5	0.80	N2	2	2.5P	60	10.0	4.1	20.0	5.5	4.5	7.0
M5	0.80	N3	2	2.5P	60	10.0	4.1	20.0	5.5	4.5	7.0
M5	0.80	N4	2	2.5P	60	10.0	4.1	20.0	5.5	4.5	7.0
M6	1.00	N2	2	2.5P	62	12.0	4.9	22.0	6.0	4.5	7.0
M6	1.00	N3	2	2.5P	62	12.0	4.9	22.0	6.0	4.5	7.0
M6	1.00	N4	2	2.5P	62	12.0	4.9	22.0	6.0	4.5	7.0
M8	1.25	N2	2	2.5P	70	22.0	-	-	6.2	5.0	8.0
M8	1.25	N3	2	2.5P	70	22.0	-	-	6.2	5.0	8.0
M8	1.25	N4	2	2.5P	70	22.0	-	-	6.2	5.0	8.0
M10	1.25	N3	3	2.5P	75	24.0	-	-	7.0	5.5	8.0
M10	1.25	N4	3	2.5P	75	24.0	-	-	7.0	5.5	8.0
M10	1.25	N5	3	2.5P	75	24.0	-	-	7.0	5.5	8.0
M12	1.75	N3	3	2.5P	85	29.0	-	-	8.5	6.5	9.0
M12	1.75	N4	3	2.5P	85	29.0	-	-	8.5	6.5	9.0
M12	1.75	N5	3	2.5P	85	29.0	-	-	8.5	6.5	9.0

